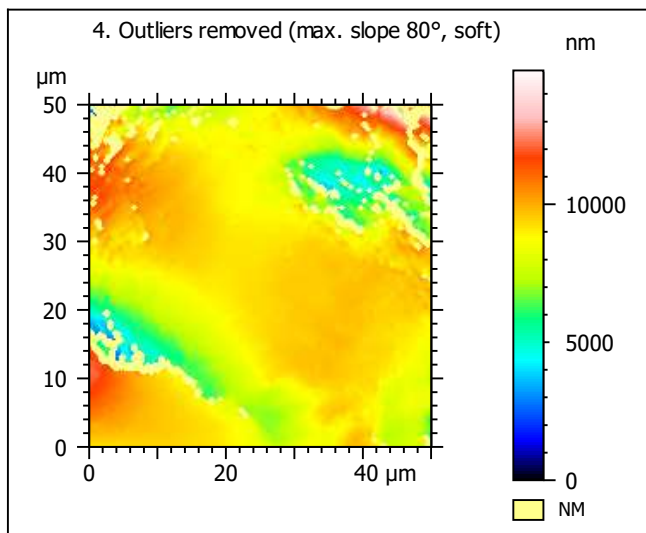
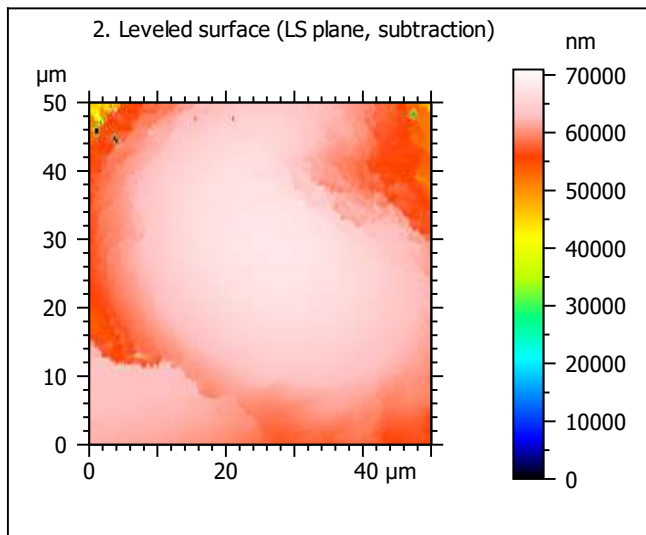
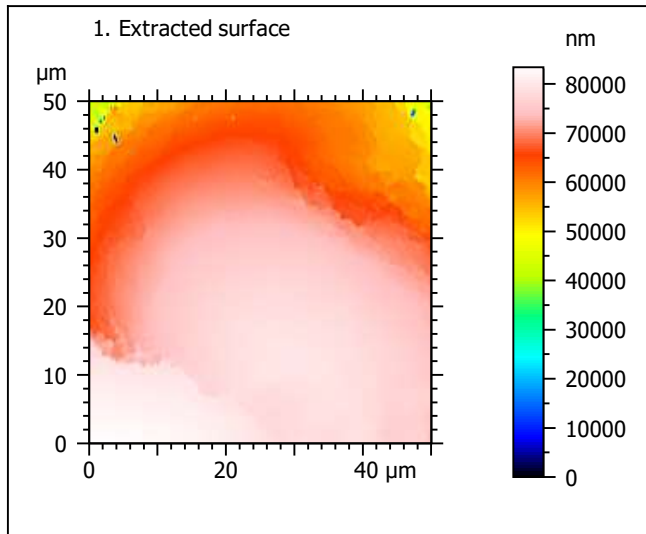
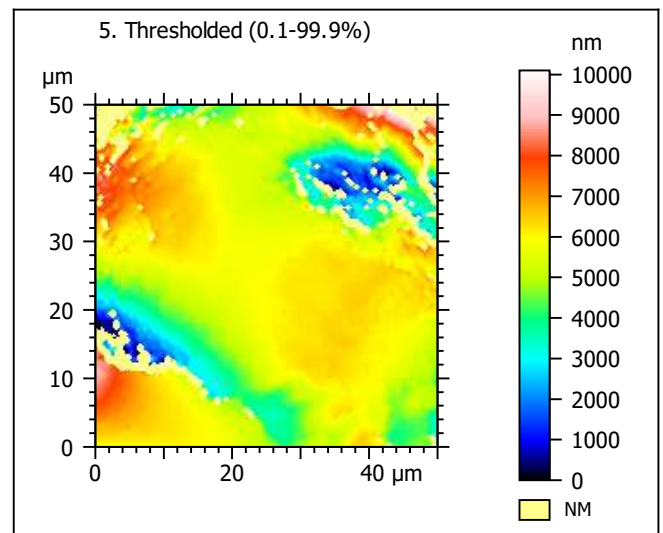
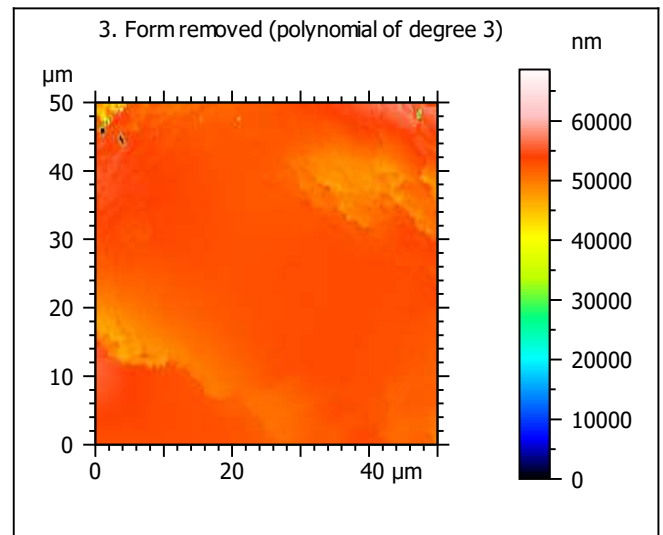


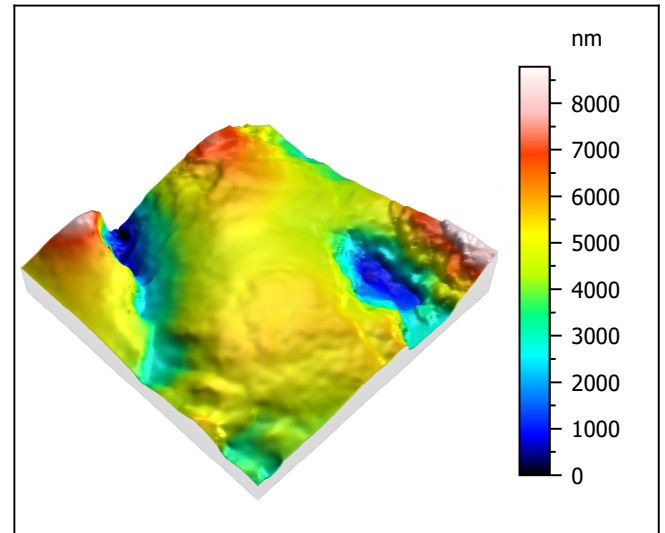
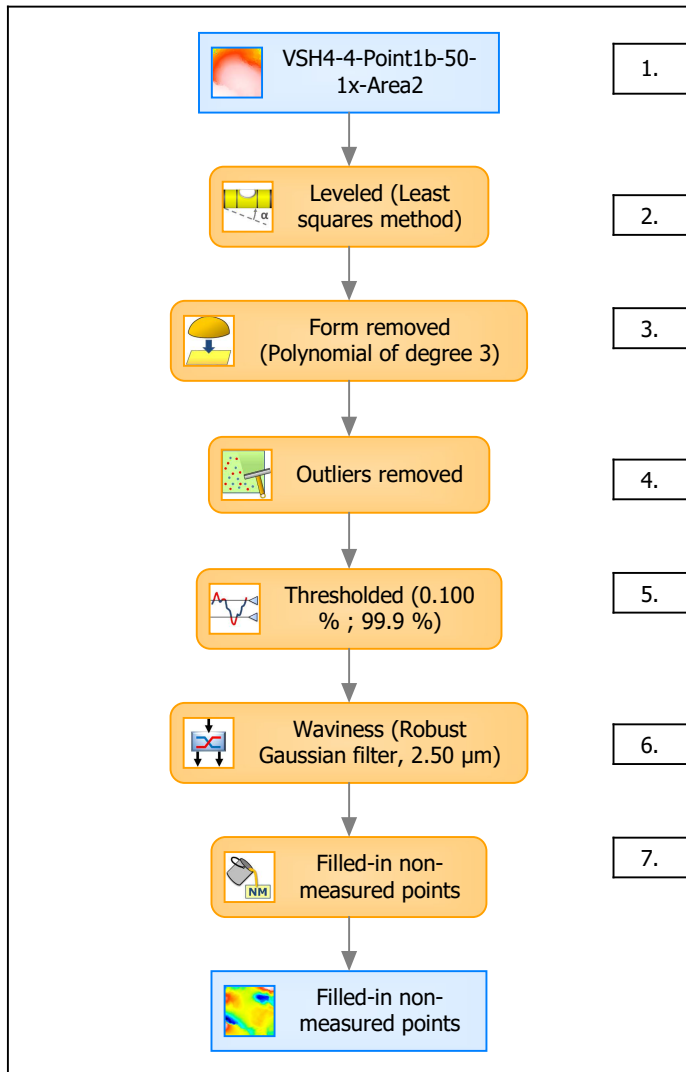
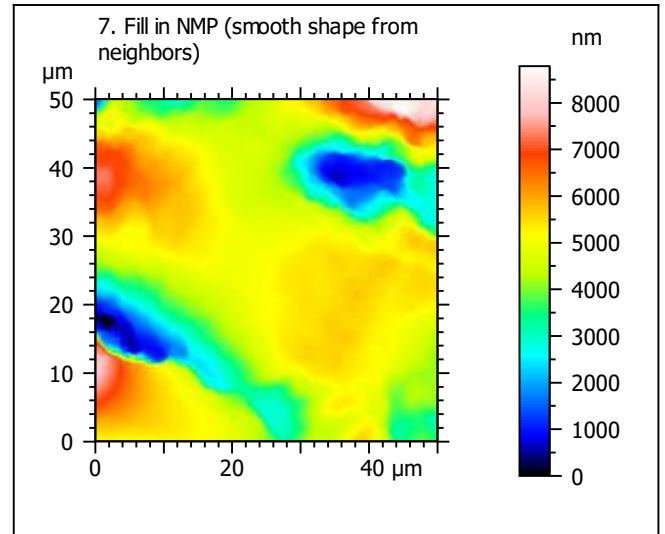
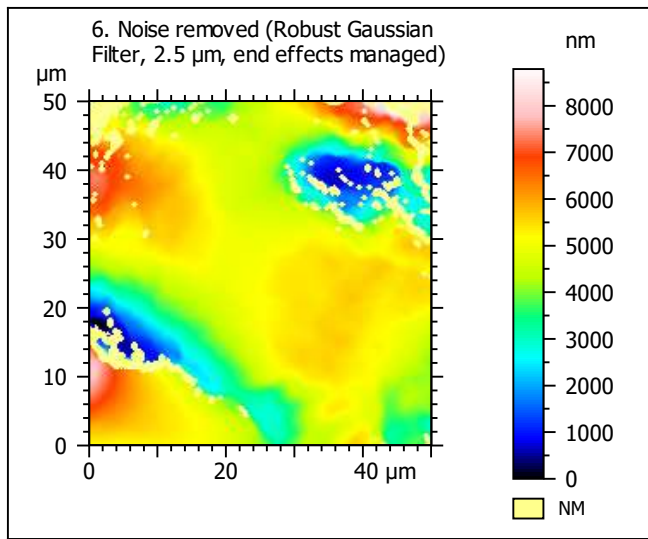
Template to process all extracted 50x50  $\mu\text{m}$  surfaces, acquired with the LEXT 4000 with the 50x/0.95 objective at 1x zoom

## A. Processing



Identity card			
Name:	VSH4-4-Point1b-50-1x-Area2		
File path:	D:\Data\Ant...\VSH4-4-Point1b-50-1x-Area2.sur		
Axis:	X		
Length:	50.0	μm	
Size:	201	points	
Spacing:	0.250	μm	
Axis:	Y		
Length:	50.0	μm	
Size:	201	points	
Spacing:	0.250	μm	
Axis:	Z		
Length:	83409	nm	
Size:	46518	digits	
Spacing:	1.79	nm	
NMP ratio:	0.00 % (0 Pts)		





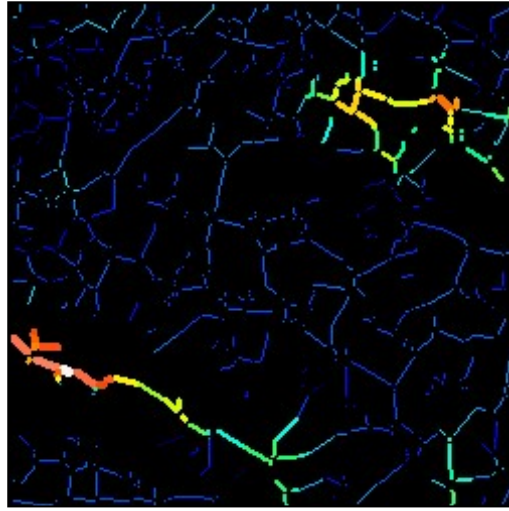
Identity card			
Name:	VSH4-4-Point1b-50-1x-Area2 > Levelled (Leas...		
<b>Axis:</b>	<b>X</b>		
Length:	50.0	$\mu\text{m}$	
Size:	201	points	
Spacing:	0.250	$\mu\text{m}$	
<b>Axis:</b>	<b>Y</b>		
Length:	50.0	$\mu\text{m}$	
Size:	201	points	
Spacing:	0.250	$\mu\text{m}$	
<b>Axis:</b>	<b>Z</b>		
Length:	8786	nm	
Size:	4900	digits	
Spacing:	1.79	nm	
NMP ratio:	0.00 % (0 Pts)		

## B. Analyses

### 8. ISO 25178-2 parameters on surface #7

ISO 25178		
Height Parameters		
Sq	1333	nm
Ssk	-0.726	
Sku	4.28	
Sp	4137	nm
Sv	4649	nm
Sz	8786	nm
Sa	981	nm
Functional Parameters		
Smr	1.05	%
Smc	1179	nm
Sxp	3825	nm
Spatial Parameters		
Sal	5.03	$\mu\text{m}$
Str	0.393	
Std	158	$^{\circ}$
Hybrid Parameters		
Sdq	0.576	
Sdr	9.49	%
Functional Parameters (Volume)		
Vm	0.0886	$\mu\text{m}^3/\mu\text{m}^2$
Vv	1.27	$\mu\text{m}^3/\mu\text{m}^2$
Vmp	0.0886	$\mu\text{m}^3/\mu\text{m}^2$
Vmc	1.05	$\mu\text{m}^3/\mu\text{m}^2$
Vvc	1.03	$\mu\text{m}^3/\mu\text{m}^2$
Vvv	0.241	$\mu\text{m}^3/\mu\text{m}^2$

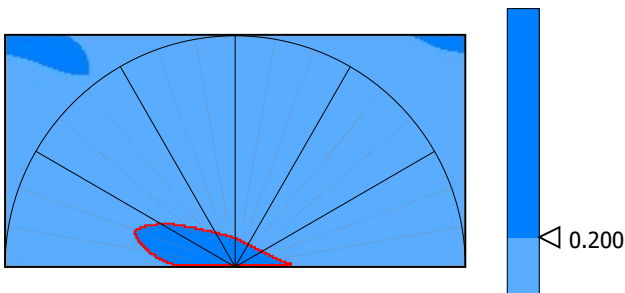
### 9. Furrow analysis surface #7



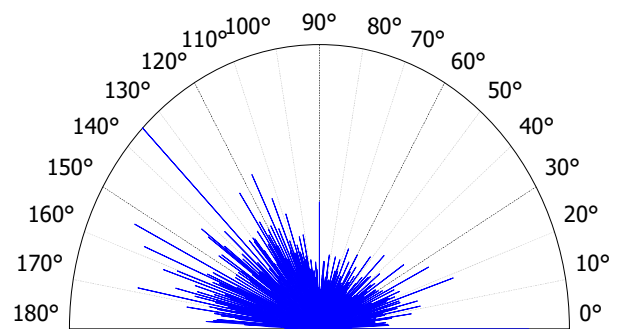
All furrows are shown.

Parameters	Value	Unit
Maximum depth of furrows	3134	nm
Mean depth of furrows	607	nm
Mean density of furrows	2455	cm/cm2

### 10. Texture isotropy and direction on surface #7



Parameters	Value	Unit
Isotropy	22.4	%
Periodicity	28.7	%
Period	33.1	$\mu\text{m}$
Direction of period	132	$^{\circ}$



Parameters	Value	Unit
Isotropy	39.3	%
First Direction	135	$^{\circ}$
Second Direction	0.188	$^{\circ}$
Third Direction	154	$^{\circ}$

